



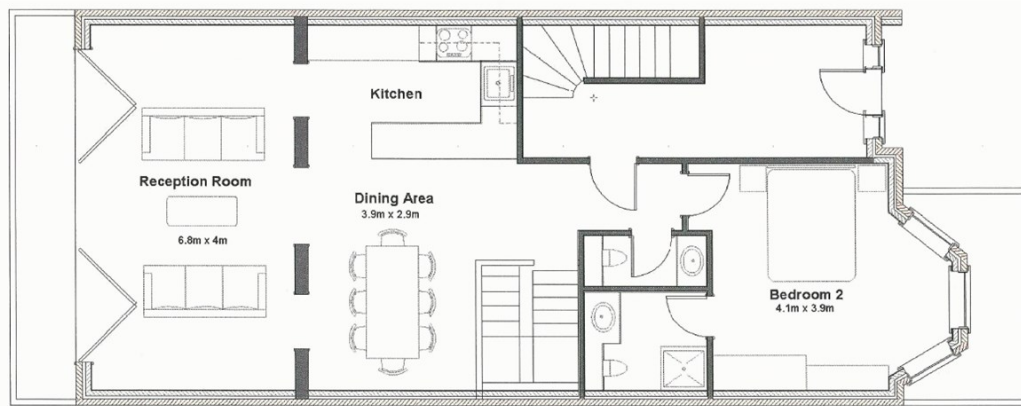
## 58 GOLDHURST TERRACE

LONDON, NW6 3HT

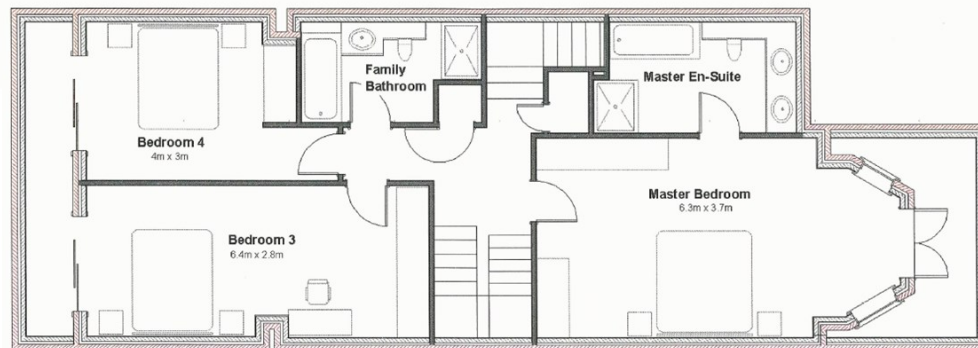
£1,650,000  
LEASEHOLD

?? A 4-bedroom, 3-bathroom (2 En-suite) garden maisonette flat within a Victorian Red-brick building! This spacious residence spanning 1717 sqft offers both elegance and convenience in one of London's most desirable neighbourhoods.

**LONDON**  
**HOMESTEAD**



**GARDEN APARTMENT, 58 GOLDHURST TERRACE, NW6**  
GROUND FLOOR PLAN



**GARDEN APARTMENT, 58 GOLDHURST TERRACE, NW6**  
LOWER GROUND FLOOR PLAN



Energy Efficiency Rating		
	Current	Potential
Very energy efficient - lower running costs		
(92 plus) <b>A</b>		
(81-91) <b>B</b>		
(69-80) <b>C</b>		
(55-68) <b>D</b>		
(39-54) <b>E</b>		
(21-38) <b>F</b>		
(1-20) <b>G</b>		
Not energy efficient - higher running costs		
<b>England &amp; Wales</b>	EU Directive 2002/91/EC	

Agents Note: Whilst every care has been taken to prepare these particulars, they are for guidance purposes only. All measurements are approximate and are for general guidance purposes only and whilst every care has been taken to ensure their accuracy, they should not be relied upon and potential buyers/tenants are advised to recheck the measurements

Hendon  
Highview House  
6 Queens Road  
Greater London  
NW4 2TH

02084 571188  
enquiries@londonhomestead.co.uk

**LONDON**  
**HOMESTEAD**